








**KEY**

-  Powys County Council
-  Brecon Beacons National Park Authority- see separate mapping
-  Snowdonia National Park Authority
-  Runoff Attenuation Features 1%
-  Wider Catchment Woodland Potential
-  Riparian Woodland Planting Potential
-  Floodplain Woodland Planting Potential

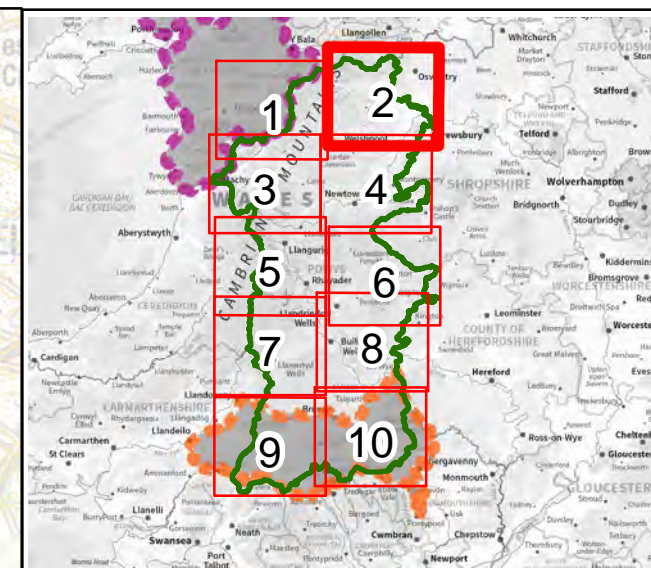
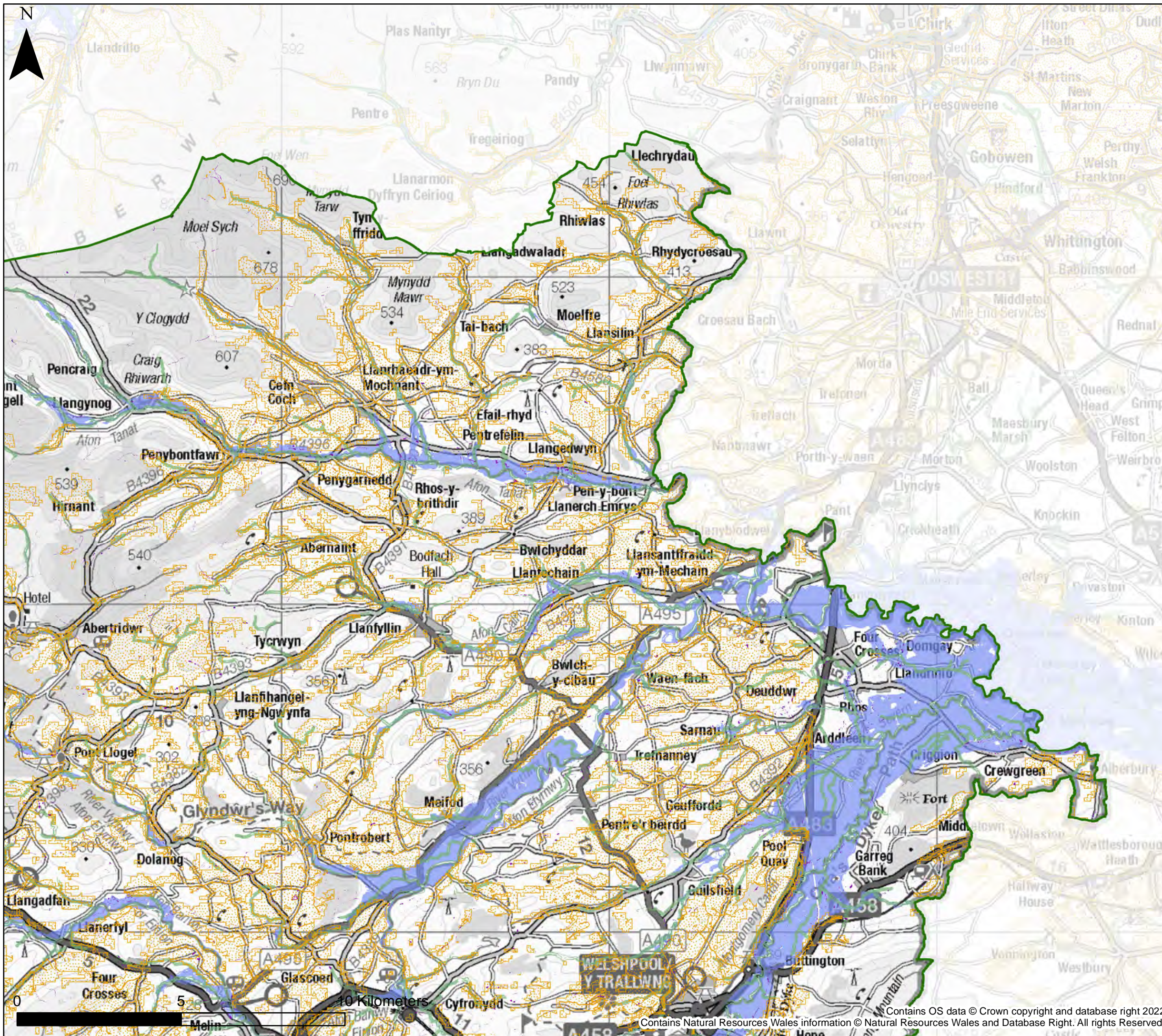
**Notes**  
 This map shows areas for woodland planting potential and runoff attenuation features. The potential attenuation features aren't shown on the authority wide overview maps. The map shows the flood risk data and information based on the map title and legend. If no data is displayed on the map, or not all features are present, this indicates that the respective flood source or features are not present within this area.  
 The Working with Natural Processes in Wales: Wider Catchment Woodland Potential dataset is based on the British Geological Survey (BGS): 50k Onshore Geology Data. This BGS data has squares missing where BGS have not surveyed the area. As the BGS data did not exist in parts of Powys NRW were unable to create the Wider Catchment Woodland Potential dataset in this area.



Powys County Council  
 Stage 1 Strategic Flood  
 Consequences Assessment  
*Working with Natural Processes -  
 Potential Mapping*

This document is the property of Jeremy Benn Associates Ltd. It shall not be reproduced in whole or in part, nor disclosed to a third party, without the permission of Jeremy Benn Associates Ltd.

Page number	Drawn	HB	21/09/2022
1 of 10	Checked	CB	22/09/2022
	Approved	GB	23/09/2022



**KEY**

- Powys County Council
- Brecon Beacons National Park Authority- see separate mapping
- Snowdonia National Park Authority
- Runoff Attenuation Features 1%
- Wider Catchment Woodland Potential
- Riparian Woodland Planting Potential
- Floodplain Woodland Planting Potential

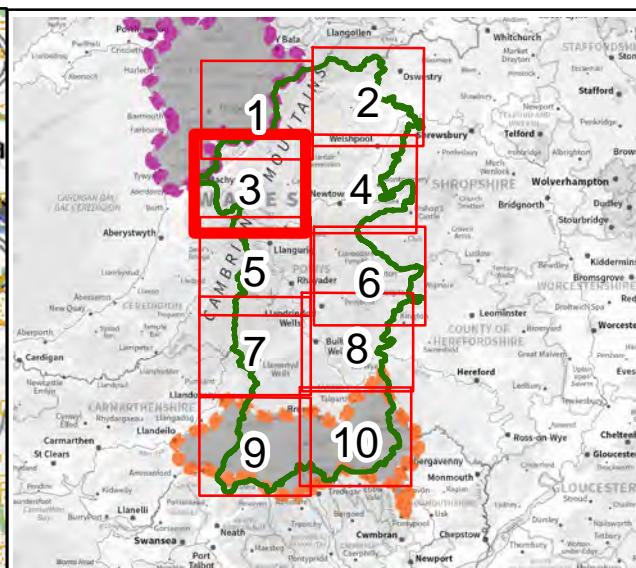
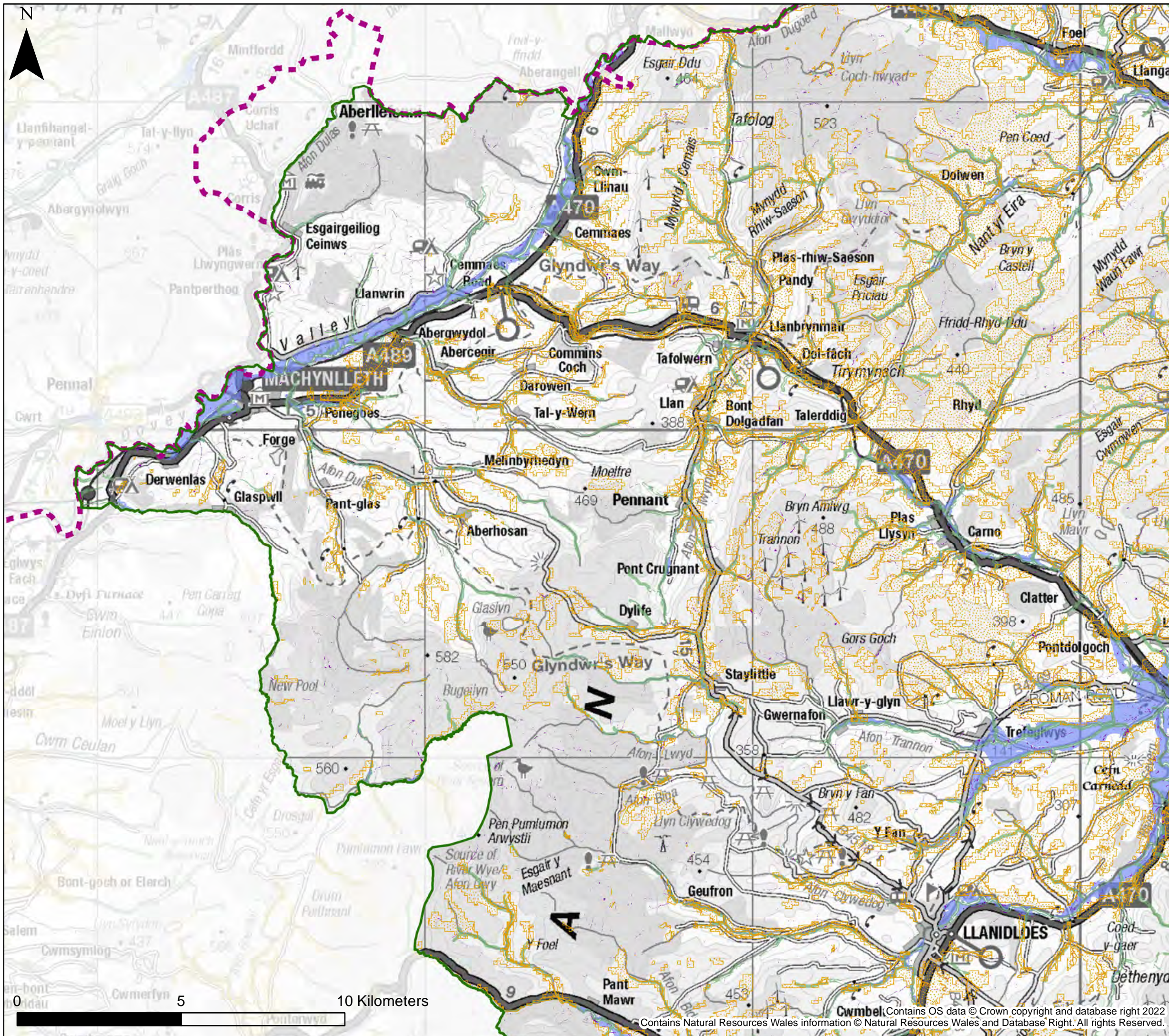
**Notes**  
 This map shows areas for woodland planting potential and runoff attenuation features. The potential attenuation features aren't shown on the authority wide overview maps. The map shows the flood risk data and information based on the map title and legend. If no data is displayed on the map, or not all features are present, this indicates that the respective flood source or features are not present within this area.  
 The Working with Natural Processes in Wales: Wider Catchment Woodland Potential dataset is based on the British Geological Survey (BGS): 50k Onshore Geology Data. This BGS data has squares missing where BGS have not surveyed the area. As the BGS data did not exist in parts of Powys NRW were unable to create the Wider Catchment Woodland Potential dataset in this area.










Powys County Council  
 Stage 1 Strategic Flood  
 Consequences Assessment  
*Working with Natural Processes -  
 Potential Mapping*

This document is the property of Jeremy Benn Associates Ltd. It shall not be reproduced in whole or in part, nor disclosed to a third party, without the permission of Jeremy Benn Associates Ltd.

Page number	Drawn	HB	21/09/2022
2 of 10	Checked	CB	22/09/2022
	Approved	GB	23/09/2022



**KEY**

-  Powys County Council
-  Brecon Beacons National Park Authority- see separate mapping
-  Snowdonia National Park Authority
-  Runoff Attenuation Features 1%
-  Wider Catchment Woodland Potential
-  Riparian Woodland Planting Potential
-  Floodplain Woodland Planting Potential

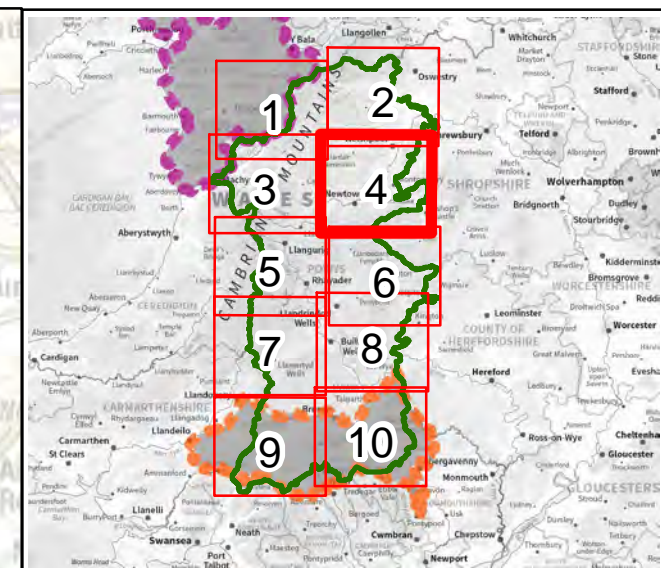
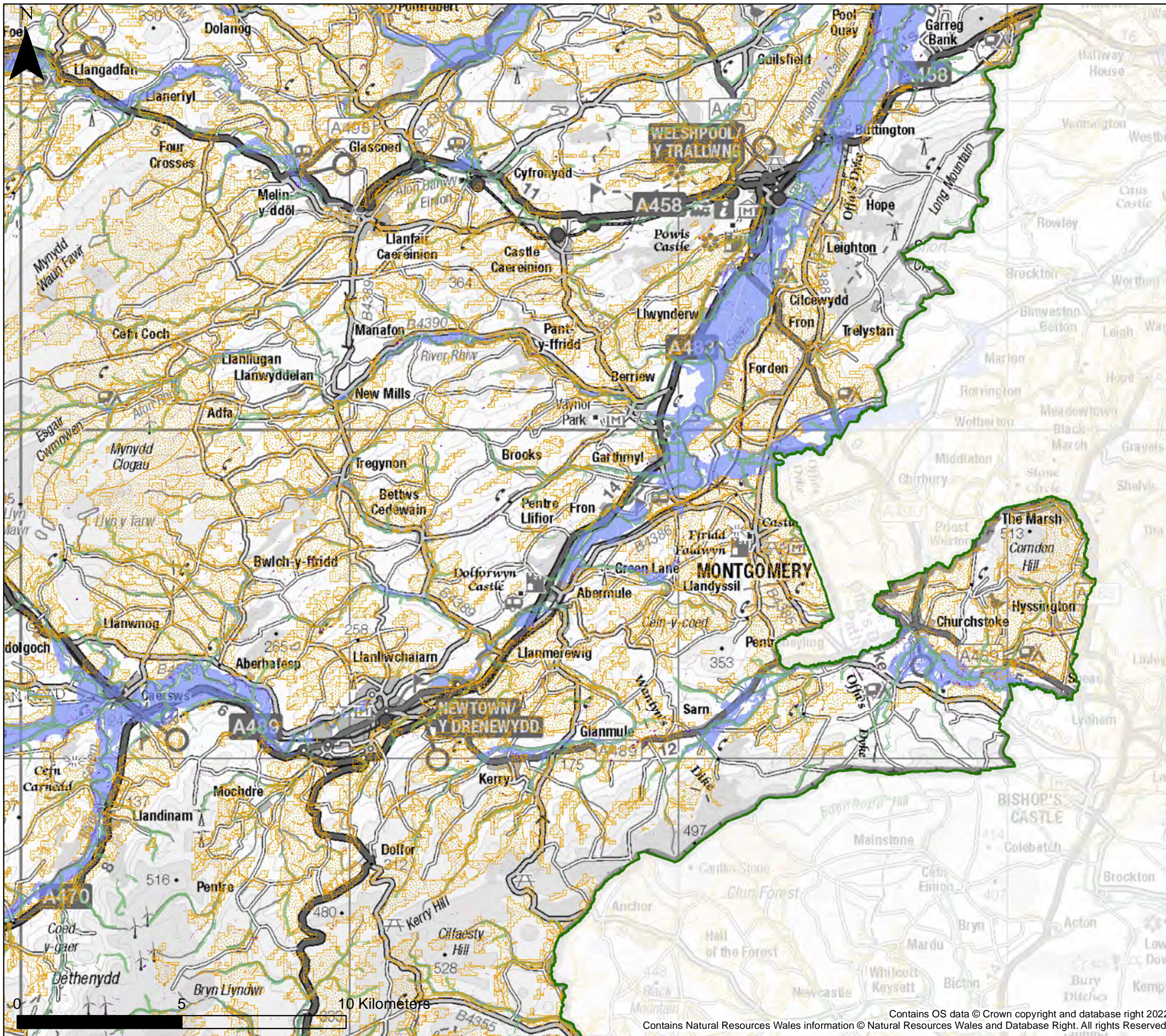
**Notes**  
 This map shows areas for woodland planting potential and runoff attenuation features. The potential attenuation features aren't shown on the authority wide overview maps. The map shows the flood risk data and information based on the map title and legend. If no data is displayed on the map, or not all features are present, this indicates that the respective flood source or features are not present within this area.  
 The Working with Natural Processes in Wales: Wider Catchment Woodland Potential dataset is based on the British Geological Survey (BGS): 50k Onshore Geology Data. This BGS data has squares missing where BGS have not surveyed the area. As the BGS data did not exist in parts of Powys NRW were unable to create the Wider Catchment Woodland Potential dataset in this area.










**Powys County Council**  
**Stage 1 Strategic Flood Consequences Assessment**  
*Working with Natural Processes - Potential Mapping*

This document is the property of Jeremy Benn Associates Ltd. It shall not be reproduced in whole or in part, nor disclosed to a third party, without the permission of Jeremy Benn Associates Ltd.

Page number	Drawn	HB	21/09/2022
3 of 10	Checked	CB	22/09/2022
	Approved	GB	23/09/2022



**KEY**

-  Powys County Council
-  Brecon Beacons National Park Authority- see separate mapping
-  Snowdonia National Park Authority
-  Runoff Attenuation Features 1%
-  Wider Catchment Woodland Potential
-  Riparian Woodland Planting Potential
-  Floodplain Woodland Planting Potential

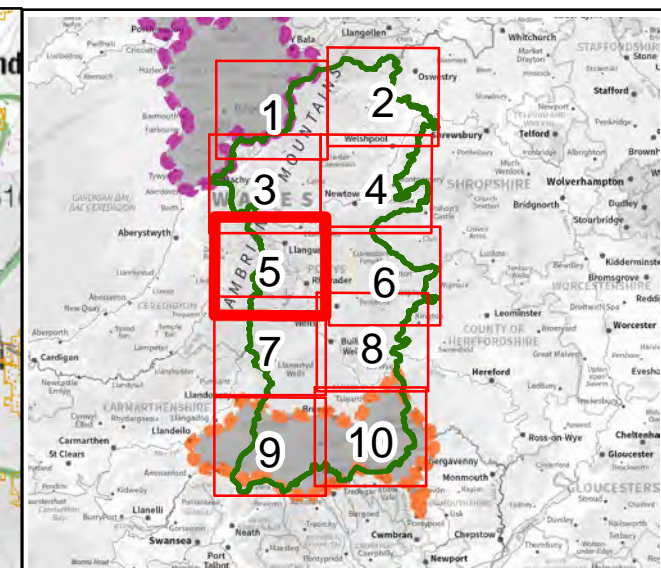
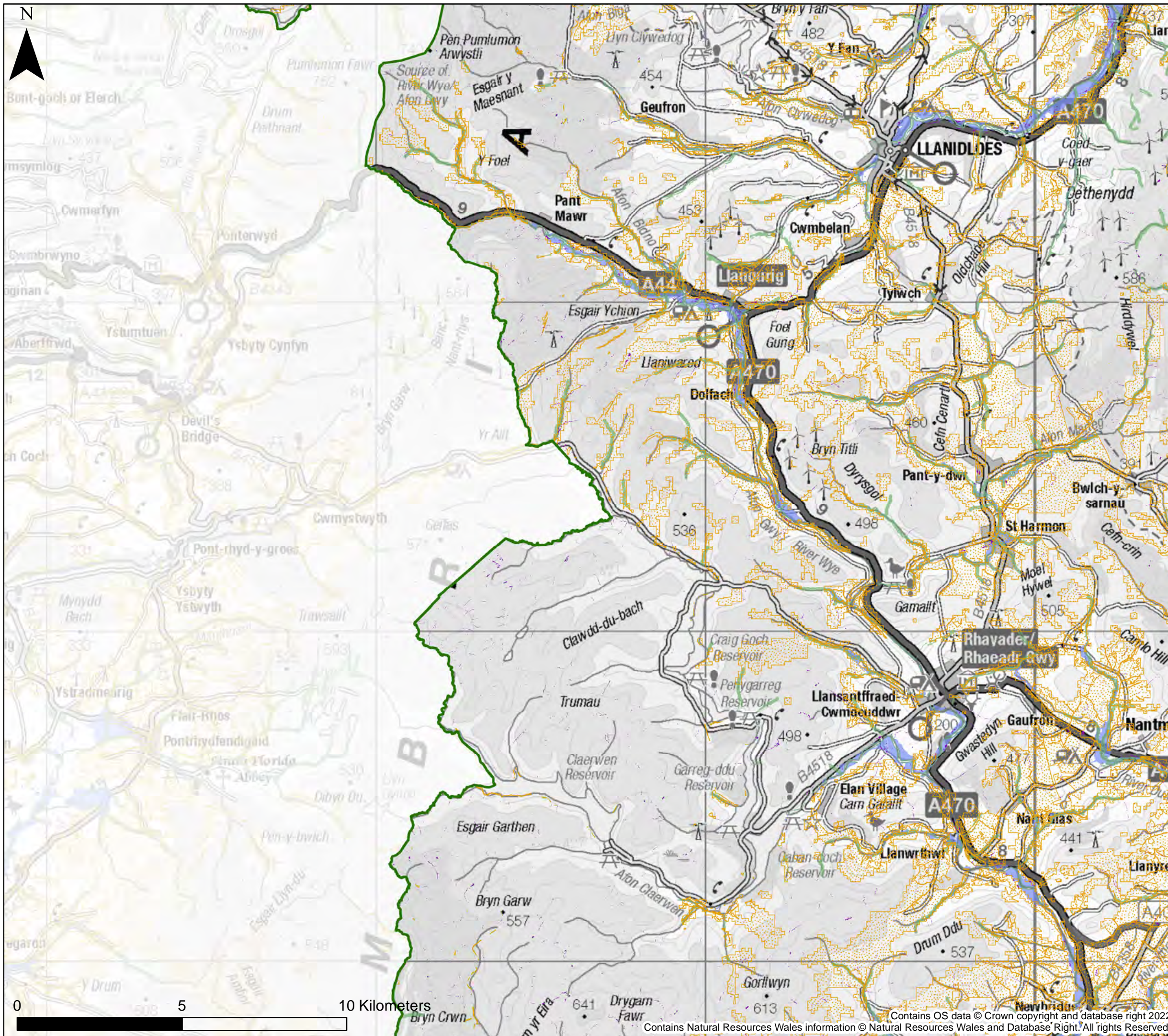
**Notes**  
 This map shows areas for woodland planting potential and runoff attenuation features. The potential attenuation features aren't shown on the authority wide overview maps. The map shows the flood risk data and information based on the map title and legend. If no data is displayed on the map, or not all features are present, this indicates that the respective flood source or features are not present within this area.  
 The Working with Natural Processes in Wales: Wider Catchment Woodland Potential dataset is based on the British Geological Survey (BGS): 50k Onshore Geology Data. This BGS data has squares missing where BGS have not surveyed the area. As the BGS data did not exist in parts of Powys NRW were unable to create the Wider Catchment Woodland Potential dataset in this area.



Powys County Council  
 Stage 1 Strategic Flood  
 Consequences Assessment  
 Working with Natural Processes -  
 Potential Mapping

This document is the property of Jeremy Benn Associates Ltd. It shall not be reproduced in whole or in part, nor disclosed to a third party, without the permission of Jeremy Benn Associates Ltd.

Page number	Drawn	HB	21/09/2022
4 of 10	Checked	CB	22/09/2022
	Approved	GB	23/09/2022



**KEY**

- Powys County Council
- Brecon Beacons National Park Authority- see separate mapping
- Snowdonia National Park Authority
- Runoff Attenuation Features 1%
- Wider Catchment Woodland Potential
- Riparian Woodland Planting Potential
- Floodplain Woodland Planting Potential

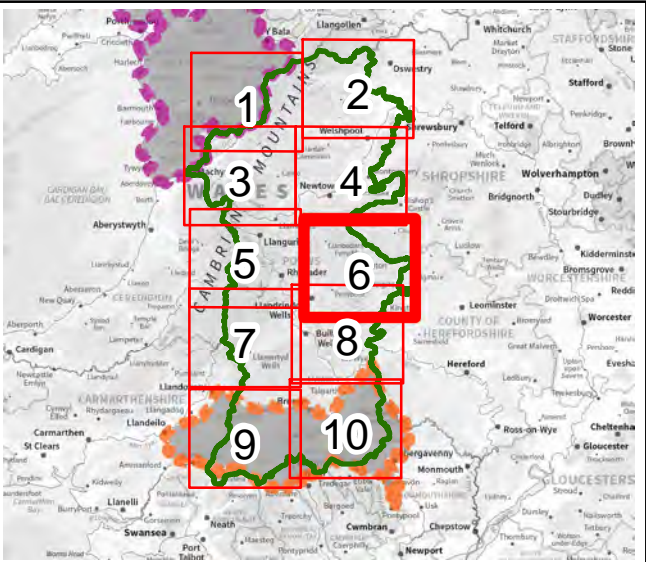
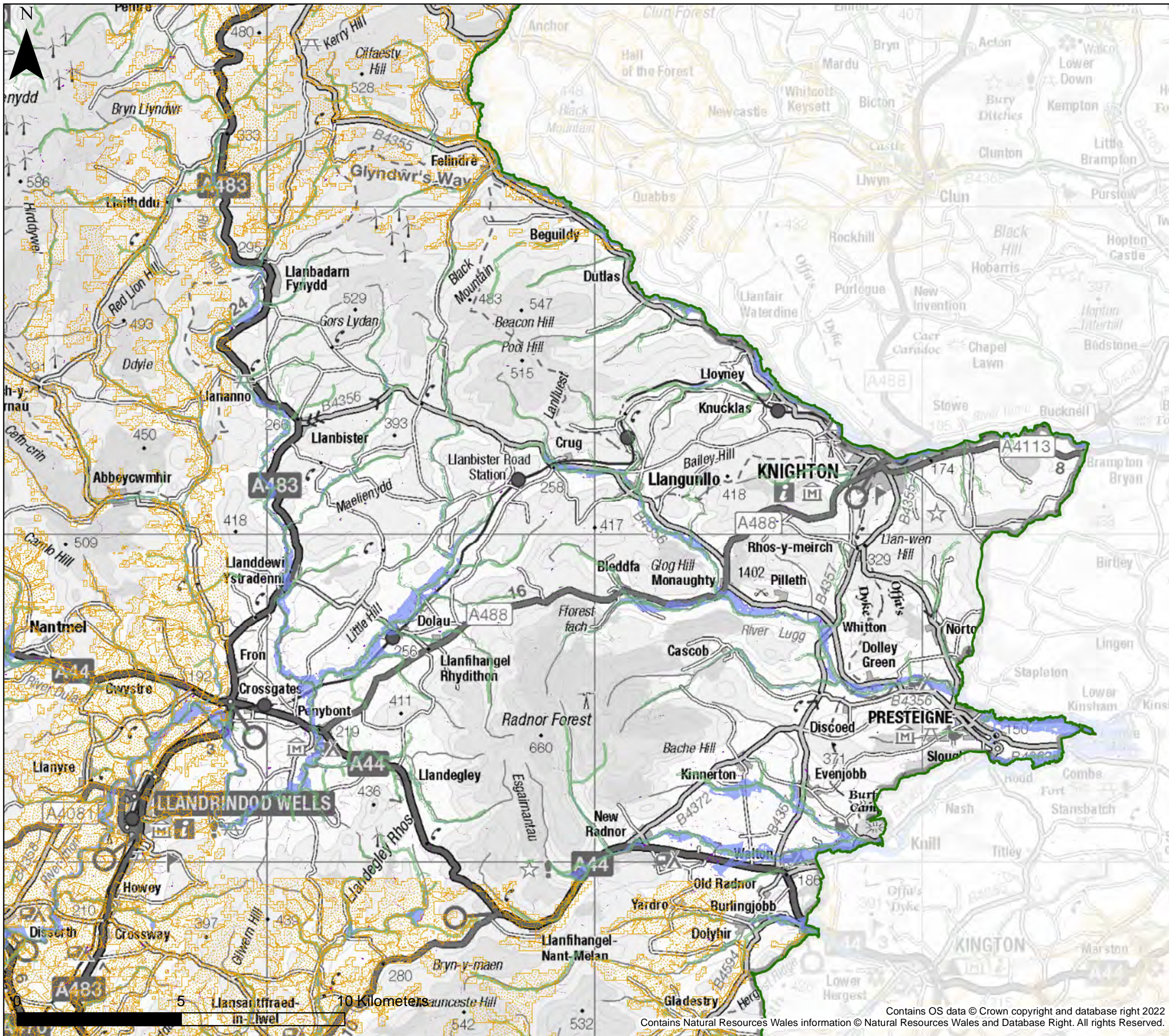
**Notes**  
 This map shows areas for woodland planting potential and runoff attenuation features. The potential attenuation features aren't shown on the authority wide overview maps. The map shows the flood risk data and information based on the map title and legend. If no data is displayed on the map, or not all features are present, this indicates that the respective flood source or features are not present within this area.  
 The Working with Natural Processes in Wales: Wider Catchment Woodland Potential dataset is based on the British Geological Survey (BGS): 50k Onshore Geology Data. This BGS data has squares missing where BGS have not surveyed the area. As the BGS data did not exist in parts of Powys NRW were unable to create the Wider Catchment Woodland Potential dataset in this area.




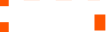





Powys County Council  
 Stage 1 Strategic Flood  
 Consequences Assessment  
*Working with Natural Processes -  
 Potential Mapping*

This document is the property of Jeremy Benn Associates Ltd. It shall not be reproduced in whole or in part, nor disclosed to a third party, without the permission of Jeremy Benn Associates Ltd.

Page number	Drawn	HB	21/09/2022
5 of 10	Checked	CB	22/09/2022
	Approved	GB	23/09/2022



**KEY**

-  Powys County Council
-  Brecon Beacons National Park Authority- see separate mapping
-  Snowdonia National Park Authority
-  Runoff Attenuation Features 1%
-  Wider Catchment Woodland Potential
-  Riparian Woodland Planting Potential
-  Floodplain Woodland Planting Potential

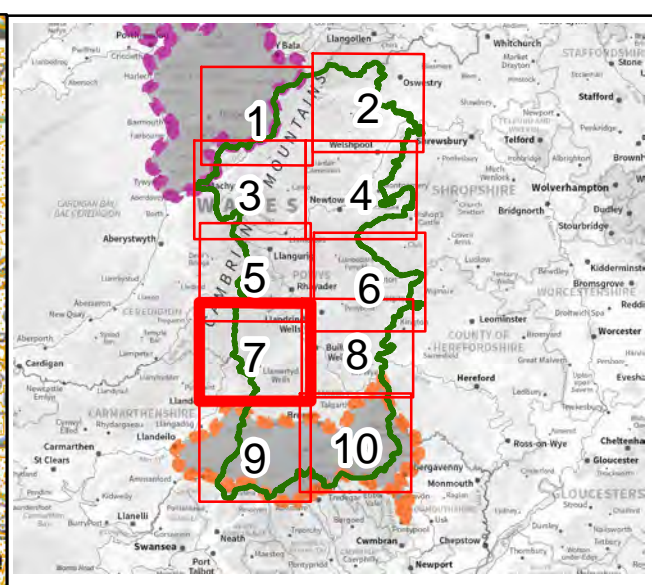
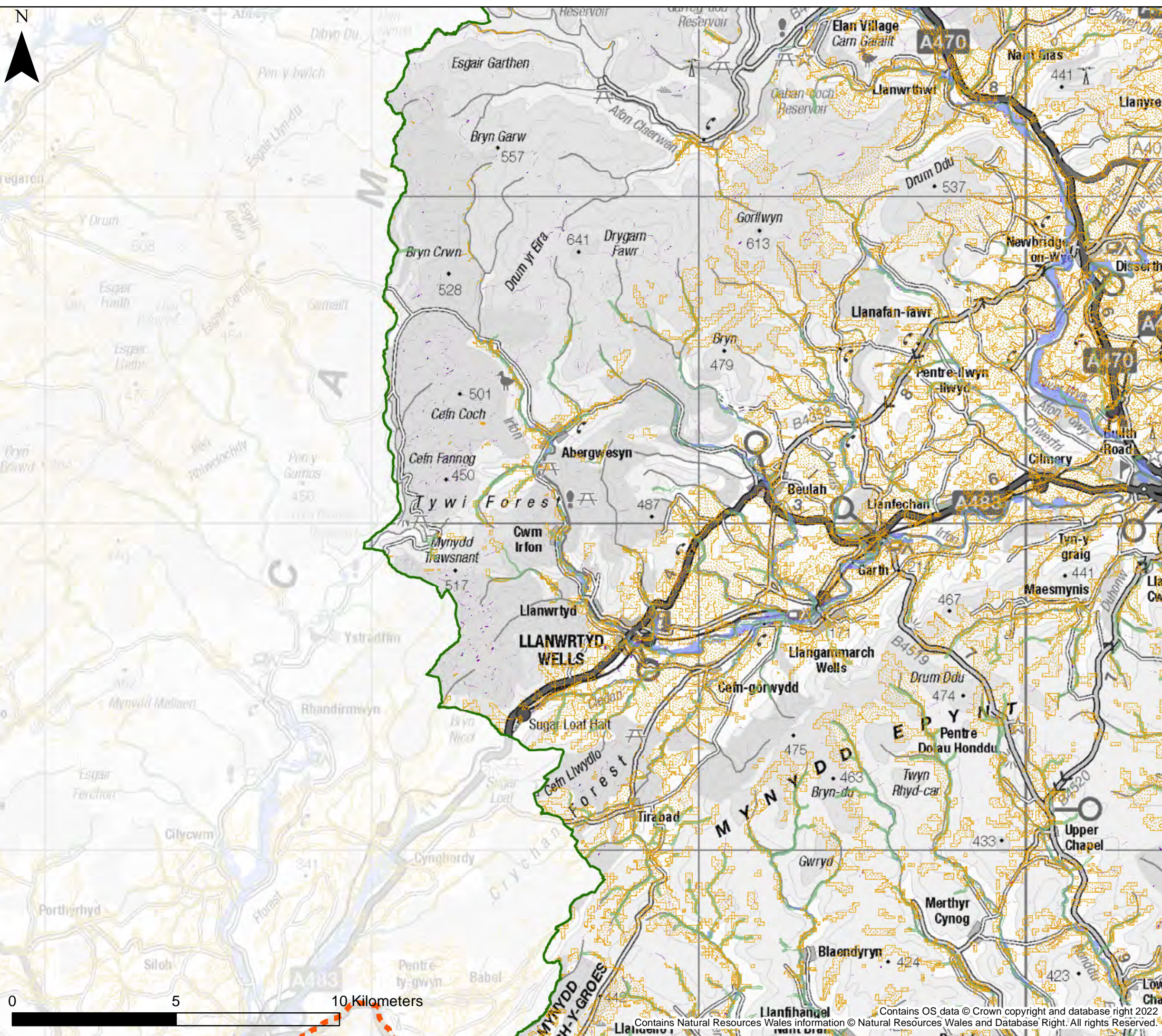
**Notes**  
 This map shows areas for woodland planting potential and runoff attenuation features. The potential attenuation features aren't shown on the authority wide overview maps. The map shows the flood risk data and information based on the map title and legend. If no data is displayed on the map, or not all features are present, this indicates that the respective flood source or features are not present within this area.  
 The Working with Natural Processes in Wales: Wider Catchment Woodland Potential dataset is based on the British Geological Survey (BGS): 50k Onshore Geology Data. This BGS data has squares missing where BGS have not surveyed the area. As the BGS data did not exist in parts of Powys NRW were unable to create the Wider Catchment Woodland Potential dataset in this area.



Powys County Council  
 Stage 1 Strategic Flood  
 Consequences Assessment  
*Working with Natural Processes -  
 Potential Mapping*

This document is the property of Jeremy Benn Associates Ltd. It shall not be reproduced in whole or in part, nor disclosed to a third party, without the permission of Jeremy Benn Associates Ltd.

Page number	Drawn	HB	21/09/2022
6 of 10	Checked	CB	22/09/2022
	Approved	GB	23/09/2022



**KEY**

- Powys County Council
- Brecon Beacons National Park Authority- see separate mapping
- Snowdonia National Park Authority
- Runoff Attenuation Features 1%
- Wider Catchment Woodland Potential
- Riparian Woodland Planting Potential
- Floodplain Woodland Planting Potential

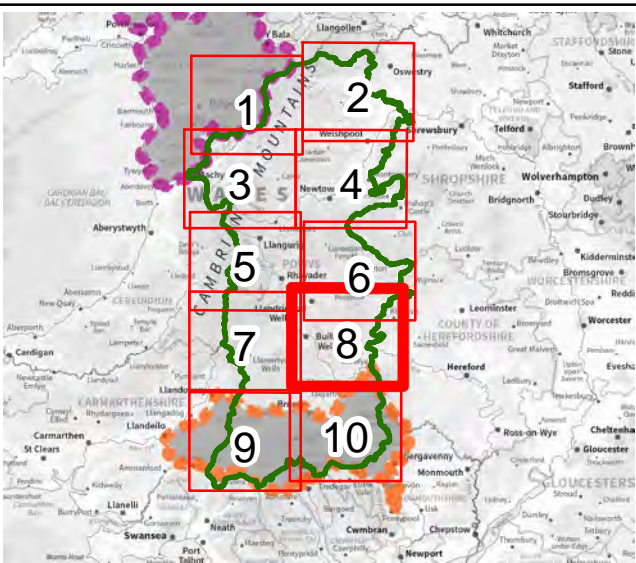
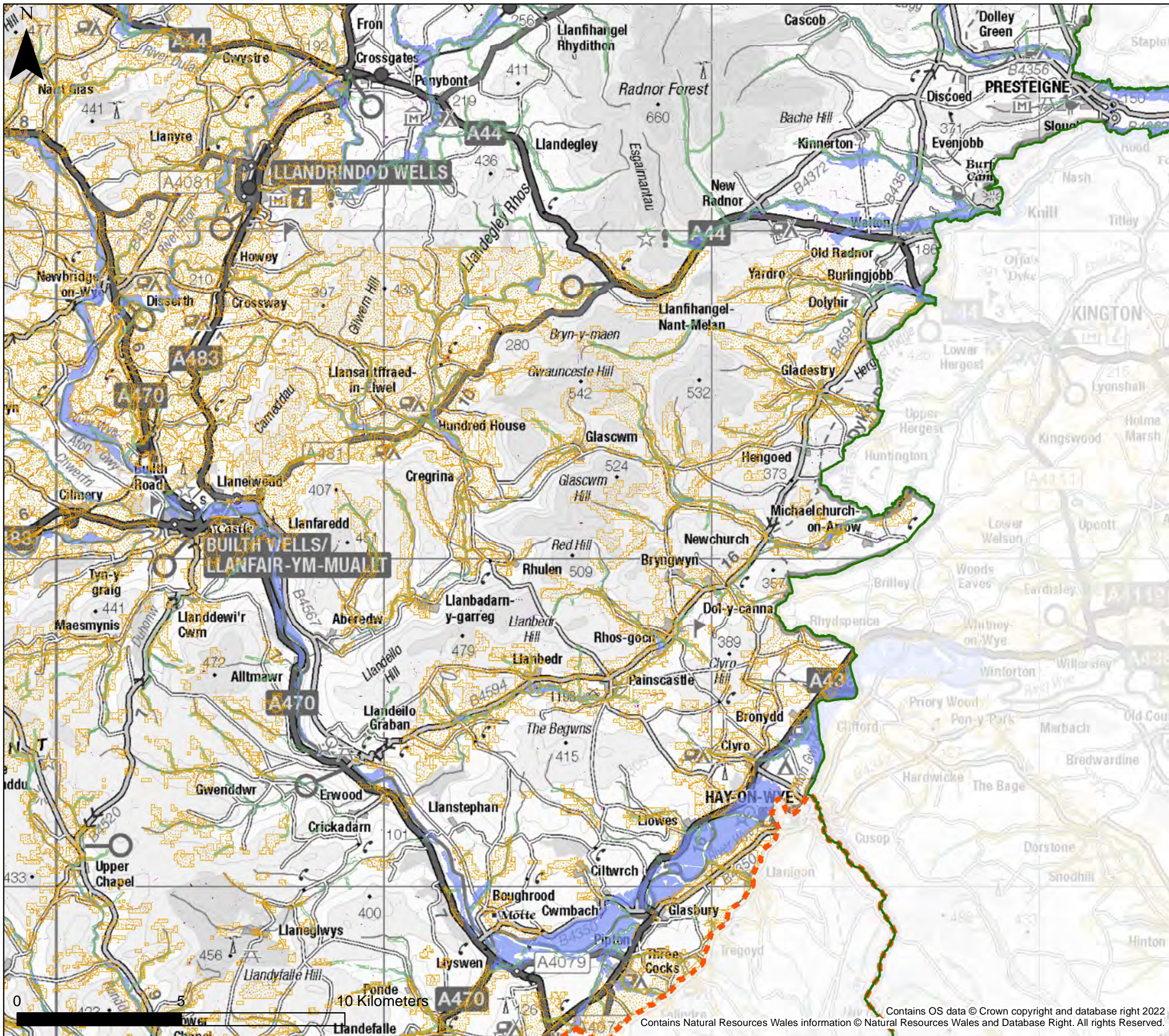
**Notes**  
 This map shows areas for woodland planting potential and runoff attenuation features. The potential attenuation features aren't shown on the authority wide overview maps. The map shows the flood risk data and information based on the map title and legend. If no data is displayed on the map, or not all features are present, this indicates that the respective flood source or features are not present within this area.  
 The Working with Natural Processes in Wales: Wider Catchment Woodland Potential dataset is based on the British Geological Survey (BGS): 50k Onshore Geology Data. This BGS data has squares missing where BGS has not surveyed the area. As the BGS data did not exist in parts of Powys NRW we were unable to create the Wider Catchment Woodland Potential dataset in this area.










Powys County Council  
 Stage 1 Strategic Flood  
 Consequences Assessment  
*Working with Natural Processes -  
 Potential Mapping*

This document is the property of Jeremy Benn Associates Ltd. It shall not be reproduced in whole or in part, nor disclosed to a third party, without the permission of Jeremy Benn Associates Ltd.

Page number	Drawn	HB	21/09/2022
7 of 10	Checked	CB	22/09/2022
	Approved	GB	23/09/2022



**KEY**

-  Powys County Council
-  Brecon Beacons National Park Authority- see separate mapping
-  Snowdonia National Park Authority
-  Runoff Attenuation Features 1%
-  Wider Catchment Woodland Potential
-  Riparian Woodland Planting Potential
-  Floodplain Woodland Planting Potential

**Notes**  
 This map shows areas for woodland planting potential and runoff attenuation features. The potential attenuation features aren't shown on the authority wide overview maps. The map shows the flood risk data and information based on the map title and legend. If no data is displayed on the map, or not all features are present, this indicates that the respective flood source or features are not present within this area. The Working with Natural Processes in Wales: Wider Catchment Woodland Potential dataset is based on the British Geological Survey (BGS): 50k Onshore Geology Data. This BGS data has squares missing where BGS have not surveyed the area. As the BGS data did not exist in parts of Powys NRW were unable to create the Wider Catchment Woodland Potential dataset in this area.

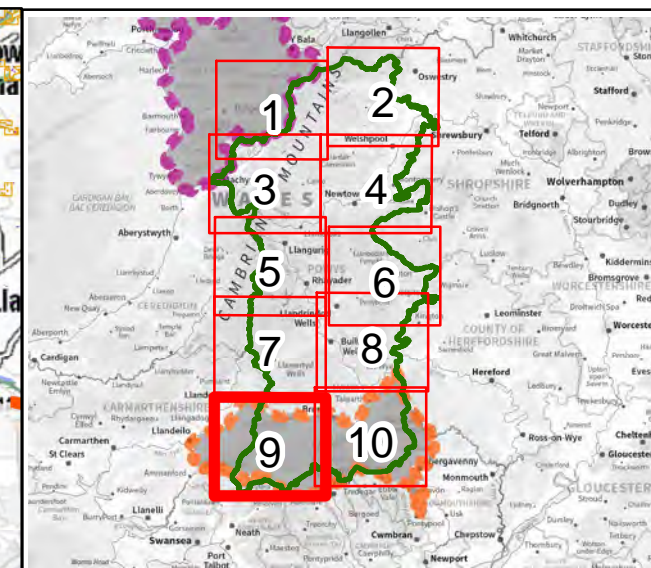
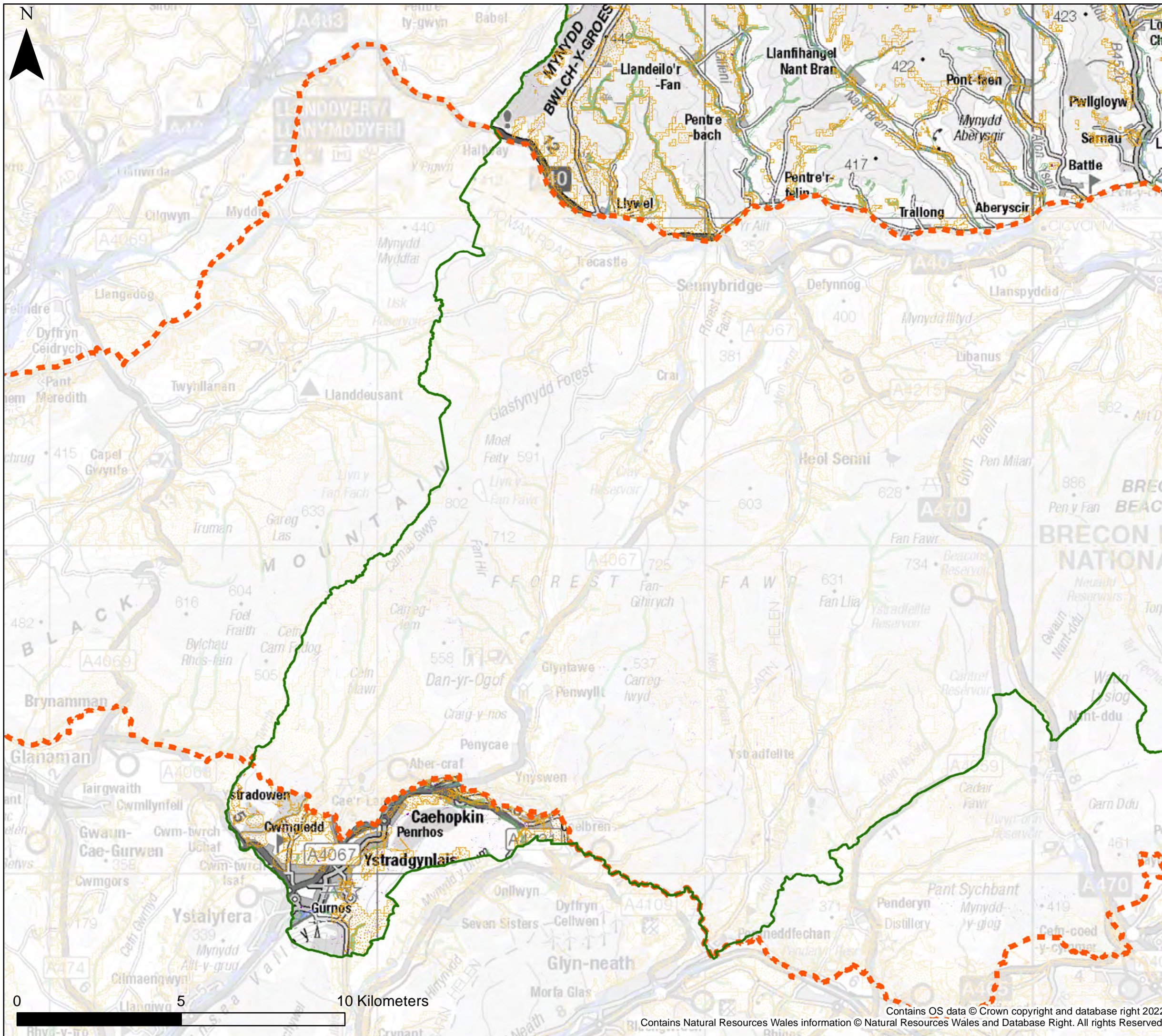


**Powys County Council**  
**Stage 1 Strategic Flood Consequences Assessment**  
*Working with Natural Processes - Potential Mapping*








This document is the property of Jeremy Benn Associates Ltd. It shall not be reproduced in whole or in part, nor disclosed to a third party, without the permission of Jeremy Benn Associates Ltd.

Page number	Drawn	HB	21/09/2022
8 of 10	Checked	CB	22/09/2022
	Approved	GB	23/09/2022





**KEY**

-  Powys County Council
-  Brecon Beacons National Park Authority- see separate mapping
-  Snowdonia National Park Authority
-  Runoff Attenuation Features 1%
-  Wider Catchment Woodland Potential
-  Riparian Woodland Planting Potential
-  Floodplain Woodland Planting Potential

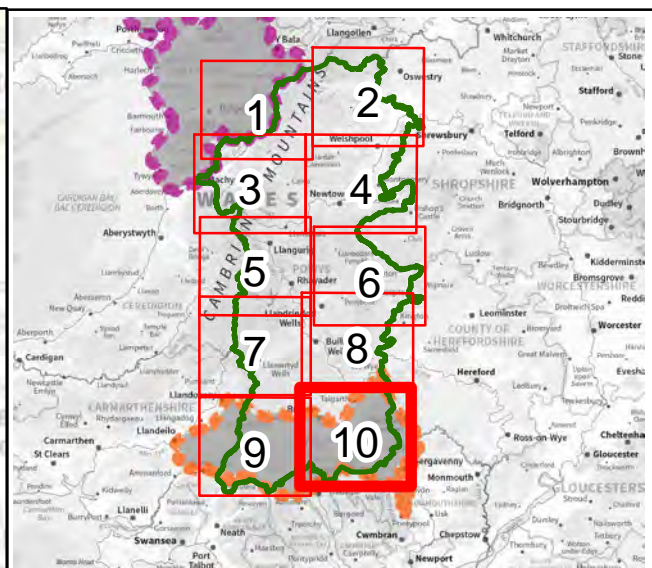
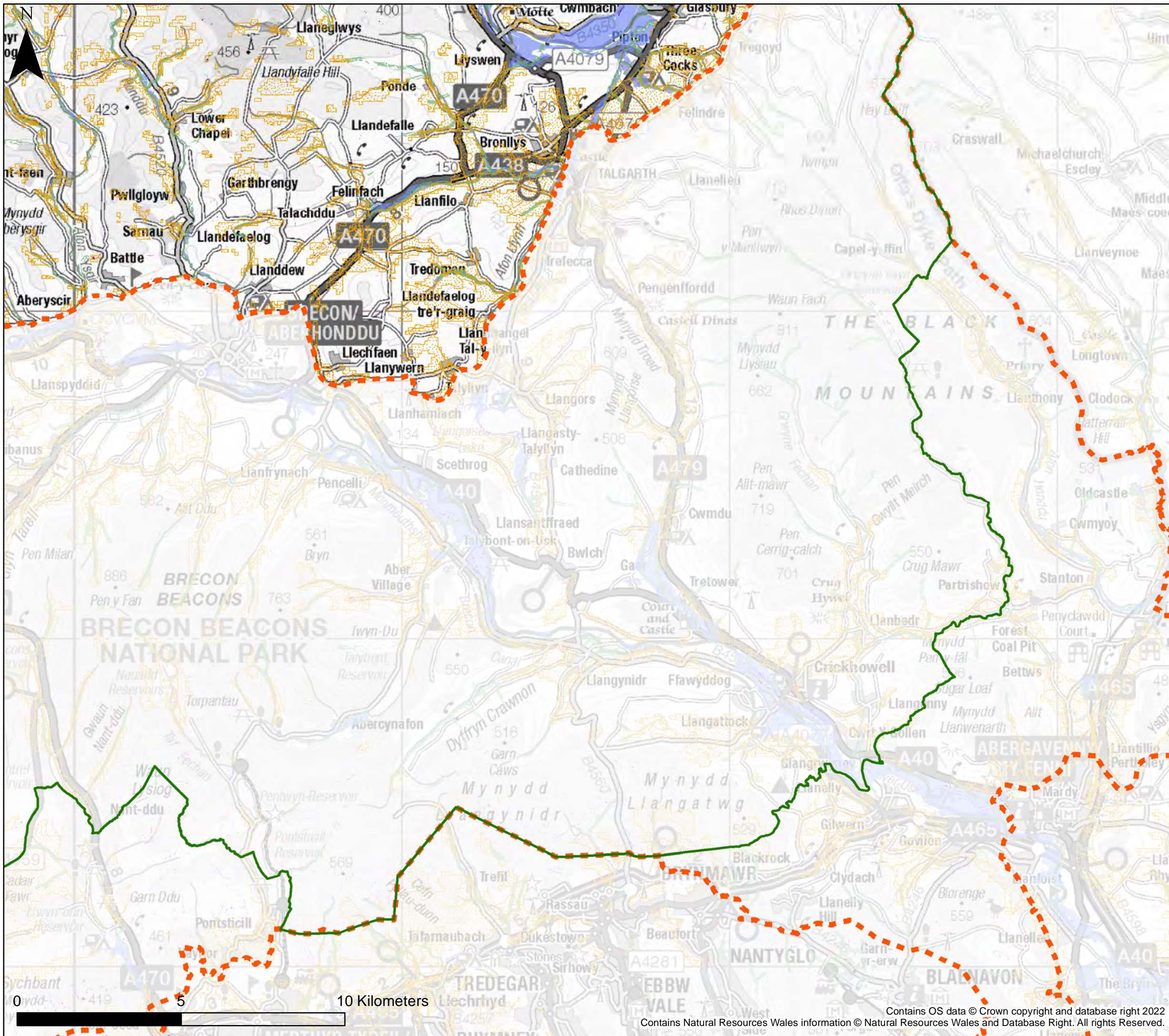
**Notes**  
 This map shows areas for woodland planting potential and runoff attenuation features. The potential attenuation features aren't shown on the authority wide overview maps. The map shows the flood risk data and information based on the map title and legend. If no data is displayed on the map, or not all features are present, this indicates that the respective flood source or features are not present within this area.  
 The Working with Natural Processes in Wales: Wider Catchment Woodland Potential dataset is based on the British Geological Survey (BGS): 50k Onshore Geology Data. This BGS data has squares missing where BGS have not surveyed the area. As the BGS data did not exist in parts of Powys NRW were unable to create the Wider Catchment Woodland Potential dataset in this area.










Powys County Council  
 Stage 1 Strategic Flood  
 Consequences Assessment  
*Working with Natural Processes -  
 Potential Mapping*

This document is the property of Jeremy Benn Associates Ltd. It shall not be reproduced in whole or in part, nor disclosed to a third party, without the permission of Jeremy Benn Associates Ltd.

Page number	Drawn	HB	21/09/2022
9 of 10	Checked	CB	22/09/2022
	Approved	GB	23/09/2022



**KEY**

-  Powys County Council
-  Brecon Beacons National Park Authority- see separate mapping
-  Snowdonia National Park Authority
-  Runoff Attenuation Features 1%
-  Wider Catchment Woodland Potential
-  Riparian Woodland Planting Potential
-  Floodplain Woodland Planting Potential

**Notes**  
 This map shows areas for woodland planting potential and runoff attenuation features. The potential attenuation features aren't shown on the authority wide overview maps. The map shows the flood risk data and information based on the map title and legend. If no data is displayed on the map, or not all features are present, this indicates that the respective flood source or features are not present within this area.  
 The Working with Natural Processes in Wales: Wider Catchment Woodland Potential dataset is based on the British Geological Survey (BGS): 50k Onshore Geology Data. This BGS data has squares missing where BGS have not surveyed the area. As the BGS data did not exist in parts of Powys NRW were unable to create the Wider Catchment Woodland Potential dataset in this area.



**Powys County Council**  
**Stage 1 Strategic Flood Consequences Assessment**  
*Working with Natural Processes - Potential Mapping*

This document is the property of Jeremy Benn Associates Ltd. It shall not be reproduced in whole or in part, nor disclosed to a third party, without the permission of Jeremy Benn Associates Ltd.

Page number	Drawn	HB	21/09/2022
10 of 10	Checked	CB	22/09/2022
	Approved	GB	23/09/2022